



Mk23 series

INSTRUCTION SAFETY MANUAL

TABLE OF CONTENT

1. Table of content	2	9.3 Pistol cleaning	14
2. Records of firearm's owner	3	9.3.1 Barel bore and the cartridge cham ber cleaning	14
3. Basic description	5	9.3.2 Other pistol parts cleaning	15
3.1 Overview of basic models	5	9.4 Preserving	15
4. Technical specifications	6	10. Schematic drawing of with components	16
5. Serial number of pistol	7	11. Warranty	19
6. Main parts of pistol	7		
7. Basic safety rules	8		
8. Operating instructions	10		
8.1 Ammunition	10		
8.2 Magazine removal	10		
8.3 Magazine loading	10		
8.4 Pistol loading	11		
8.5 Reloading during shooting	11		
8.6 Pistol unloading	11		
8.7 Safety mode	12		
8.8 Sight adjustment	12		
9. Maintenance instructions	12		
9.1 Pistol disassembly and cleaning	12		
9.2 Assembling	14		

2. RECORDS OF FIREARM'S OWNER

Model:..... Serial number:..... Date of purchase:.....

IMPORTANT WARNING: ALL INFORMATION AND SPECIFICATIONS CONTAINED IN THIS MANUAL MAY CHANGE WITHOUT NOTIFICATION!

READ THE ENTIRE MANUAL CAREFULLY BEFORE USING THIS FIREARM AND MAKE SURE THAT ANY PERSON USING OR HAVING ACCESS TO THIS FIREARM READS AND UNDERSTANDS ALL OF THIS MANUAL PRIOR TO USE OR ACCESS TO THE FIREARM.

WARNING: All firearms have lethal potential. Therefore read the Basic Safety Rules carefully and understand them fully before attempting to use this firearm!

NOTICE: The Producer and / or its Local Official Distributors assume no responsibility for product malfunction, physical injury or property damage resulting in whole or in part from criminal or negligent use of the product, improper or careless handling, unauthorized modifications and the use of defective and / or improper hand-loading. Reloaded or remanufactured ammunition, customer abuse or neglect of the product are influences beyond manufacturer's direct and immediate control.

NOTICE: GRAND POWER reserves the right to make any changes it deems necessary to improve its models or to meet any requirements of manufacturing or commercial nature.

[illegible][illegible]

3. BASIC DESCRIPTION

The GRAND POWER K100 / P1 / P1S / Q100 / Q1 / Q1S/ X-Calibur/ X-Calibur MATCH are self-loading handguns chambered in 9x19 Luger. They are intended for sport shooting, military and law enforcement use, as well as personal defense. The pistols utilize a unique and patented construction. The pistols (aside from the striker fired Q100, Q1, and Q1S) are hammer fired and feature a rotating barrel locking system. This locking system minimizes recoil. The pistols have fully ambidextrous controls, are optics ready – 4 mounting plates are supplied with each pistol. The trigger is either DA/SA (in the case of the K100/P1/P1S/X-Calibur/X-Calibur Match) or striker fired (in the case of the Q100/Q1/Q1S). The pistols are packaged in a plastic case which includes 4 red dot mounting plates, 2 steel 15 round magazines, a cleaning brush, a hex key, a safety manual, warranty card and 4 interchangeable backstraps.

Main features are:

- Optics ready slide
- modern design
- Light and crisp trigger
- High accuracy
- Ambidextrous controls

In case of any questions we recommend to contact your official importer

3.1 OVERVIEW OF BASIC MODELS

K100 – standard, duty sized model

P1 – a compact version of the K100, with a shorter slide

P1S – the most compact version with a P1 slide and a shorter grip, with a capacity of 12 rounds

Q100 – duty sized striker fired model

Q1 – a compact version of the Q100, with a shorter slide

Q1S – The most compact striker fired model, with a Q1 slide and a shorter grip, with a 12 round capacity

X-Calibur – a competition model, with a tuned trigger, oversized controls, adjustable sights

X-Calibur MATCH – a competition model, with a tuned trigger, steel dustcover, oversized controls, adjustable sights

4. TECHNICAL SPECIFICATIONS

Model:	X-calibur	X-calibur Match	K100	P1	P1S	Q100	Q1	Q1S
Caliber:	9×19	9×19	9×19	9×19	9mm Luger	9×19	9×19	9mm Luger
Overall length:	215mm	215mm	202,1mm	187,5mm	183mm	202,1mm	188,1mm	183mm
Width:	47,8mm	47,8mm	36,2mm	36,2mm	34mm	34,2mm	34,2mm	34mm
Height without magazine:	134,5mm	134,5mm	133mm	133mm	119mm	133mm	133mm	119mm
Barrel length:	121mm	121mm	108mm	93mm	93mm	108mm	93mm	93mm
Weight w empty magazine:	872g	1000g	785g	735g	640g	810g	755g	650g
Weight w/o magazine:	784g	912g	697g	647g	640g	722g	667g	650g
Standard magazine capacity:	15	15	15	15	12	15	15	12

5. SERIAL NUMBER OF PISTOL

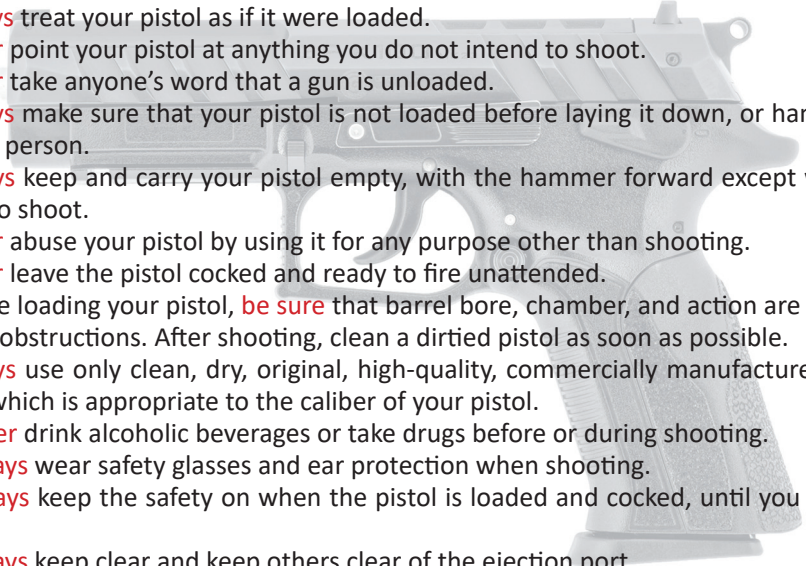
The serial number is located on various parts of the pistol. Each serial number is specific to that pistol and is used for identification and registration. It is recommended to record your serial number in your manual and keep the information in a secured location.

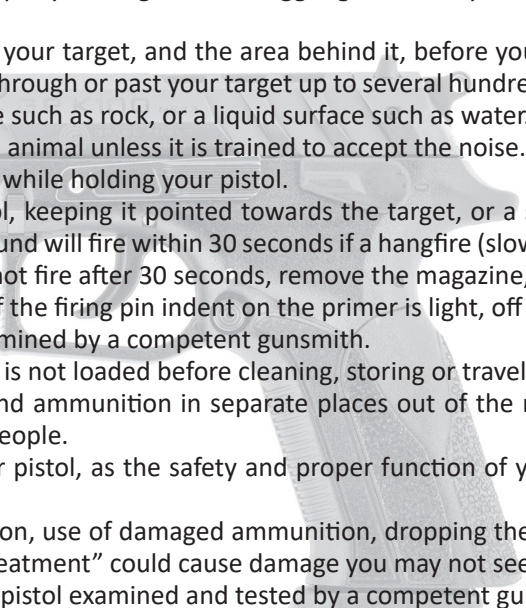
6. MAIN PARTS OF PISTOL



7. BASIC SAFETY RULES

ALWAYS FOLLOW THE SAFETY INSTRUCTIONS FOR YOUR SAFETY AND THE SAFETY OF OTHERS!

- 
1. **Always** treat your pistol as if it were loaded.
 2. **Never** point your pistol at anything you do not intend to shoot.
 3. **Never** take anyone's word that a gun is unloaded.
 4. **Always** make sure that your pistol is not loaded before laying it down, or handing it to another person.
 5. **Always** keep and carry your pistol empty, with the hammer forward except when you intend to shoot.
 6. **Never** abuse your pistol by using it for any purpose other than shooting.
 7. **Never** leave the pistol cocked and ready to fire unattended.
 8. Before loading your pistol, **be sure** that barrel bore, chamber, and action are clean and clear of obstructions. After shooting, clean a dirtied pistol as soon as possible.
 9. **Always** use only clean, dry, original, high-quality, commercially manufactured ammunition, which is appropriate to the caliber of your pistol.
 10. **Never** drink alcoholic beverages or take drugs before or during shooting.
 11. **Always** wear safety glasses and ear protection when shooting.
 12. **Always** keep the safety on when the pistol is loaded and cocked, until you are ready to fire.
 13. **Always** keep clear and keep others clear of the ejection port.

- 
14. **Never** squeeze the trigger or put your finger in the trigger guard until you are aiming at a target and ready to shoot.
 15. **Always** be absolutely sure of your target, and the area behind it, before you squeeze the trigger. A bullet could travel through or past your target up to several hundred meters.
 16. **Never** shoot at a hard surface such as rock, or a liquid surface such as water.
 17. **Never** fire your pistol near an animal unless it is trained to accept the noise.
 18. **Never** indulge in “horseplay” while holding your pistol.
 19. **Failure to fire:** hold the pistol, keeping it pointed towards the target, or a safe open area and wait 30 seconds. The round will fire within 30 seconds if a hangfire (slow ignition) has occurred. If the round does not fire after 30 seconds, remove the magazine, eject the round and examine the primer; if the firing pin indent on the primer is light, off center, or non-existent, have the pistol examined by a competent gunsmith.
 20. **Always** make sure your pistol is not loaded before cleaning, storing or traveling.
 21. **Always** lock up your pistol and ammunition in separate places out of the reach and sight of children and untrained people.
 22. **Never** alter any parts of your pistol, as the safety and proper function of your pistol could be seriously compromised.
 23. **Always** be aware that corrosion, use of damaged ammunition, dropping the pistol on hard surfaces or other “coarse treatment” could cause damage you may not see. If something like this happens, have the pistol examined and tested by a competent gunsmith.

8. OPERATING INSTRUCTIONS

8.1 AMMUNITION

Use only factory-manufactured standard ammunition of appropriate caliber 9 x 19mm Luger which are in compliance with IPC regulations (International Proof Commission or SAAMI -Sporting Arms and Ammunition Manufacturers Institute Inc. of the United States). The use of other cartridges could damage the handgun, cause malfunctions or injure the shooter.

8.2 MAGAZINE REMOVAL

Hold the pistol in your right or left hand, press the magazine catch with the thumb and with the other hand remove the magazine. Before unloading to avoid breakage is advised to use other hand to secure magazine 2-4 cm underneath magazine plate.

8.3 MAGAZINE LOADING

With the open end facing up, grasp the magazine in one hand. Place the cartridge on the magazine follower. Press the cartridge down and back until it touches the rear flat edge of the magazine. Place the next cartridge on top of the previous cartridge and press down and back. We recommend that when some cartridges are already loaded in the magazine, press them down slightly with the thumb of the hand that holds the magazine. The number of cartridges can be checked through the inspection holes in the sides of the magazine. Do not try to exceed the magazine capacity — it can cause a feeding failure.

8.4 PISTOL LOADING

CAUTION: ALWAYS MAKE SURE THE PISTOL IS POINTED IN A SAFE DIRECTION!

Insert a loaded magazine into the pistol and ensure that it has engaged the magazine catch. Hold the grip of the pistol with one hand, and with the thumb and index finger of the other hand, grasp the serrated finger grips on both sides of the slide. Retract the slide to a stop and allow it to snap forward. This procedure cocks the hammer and inserts a cartridge into chamber. The pistol is now ready to fire. If you do not intend to fire immediately, ensure the pistol safety is on.

8.5 RELOADING DURING SHOOTING

When the last cartridge is fired, the slide will stay to the rear. Remove the empty magazine and replace it with a loaded one. Thumb down the slide stop with the shooting hand, or with the other hand, draw back the slide and allow it to snap forward. The pistol is again loaded and ready to fire.

8.6 PISTOL UNLOADING

CAUTION: ALWAYS MAKE SURE THE PISTOL IS POINTED IN A SAFE DIRECTION!

- remove the magazine
- draw back the slide and look to see if the last cartridge has been extracted from the chamber and ejected
- let the slide move fully forward and press the trigger (dry fire)

8.7 SAFETY MODE

The K100, P1, P1S, X-calibur and X-calibur MATCH have SA/DA trigger with external safety in place. The Q100, Q1 and Q1S are striker fired and are fitted with a trigger safety as standard.

8.8 SIGHT ADJUSTMENT

The pistols before being sold, are “zeroed” at the manufacturing plant at a distance of 15 m so that the mean point of impact conforms to the point of aim. Windage correction can be carried out by drifting the rear sight in the dovetail and then secured a set screw. Elevation correction is carried out by exchanging the front sights for higher or lower ones.

9. MAINTENANCE INSTRUCTIONS

9.1 PISTOL DISASSEMBLY AND CLEANING

CAUTION: ALWAYS MAKE SURE THE PISTOL IS POINTED IN A SAFE DIRECTION!

- Remove the magazine. The pistol must not be disassembled with the magazine inserted.
- **MAKE SURE THERE IS NO CARTRIDGE IN THE CHAMBER!**
- Pull the takedown segment down — both sides.
- Pull the slide fully back, lift the rear end then move the slide forward to separate it from the barrel and frame.
- Remove the recoil spring and recoil spring guide and take out the barrel



No further disassembly is needed for routine maintenance. When a great number of cartridges has been fired, it is advisable to have the firing pin and magazine cleaned by a competent gunsmith.

9.2 ASSEMBLING

Assembly procedure is done in reverse sequence to disassembly. BEWARE: during assembly the barrel MUST be in the forward-most position.

9.3 PISTOL CLEANING

Clean the pistol: each time you use it — as soon as possible after shooting - if you get your pistol wet - at least once a year in a temperate climate - as often as once a month in a tropical climate, or other demanding environment

9.3.1 BARREL BORE AND CARTRIDGE CHAMBER CLEANING

If the pistol has not been fired or if only a few cartridges have been fired, clean the barrel bore and cartridge chamber with a clean patch attached to the cleaning rod. When the barrel bore is very dirty, apply a gun cleaning solution using a cleaning brush. Let the solvent act for about 10 minutes (time may vary depending on the solvent agent being used). Then thoroughly scrub the barrel bore with the included brush. Next, dry the barrel bore and cartridge chamber with a clean patch and check that all powder residues have been removed. Repeat this procedure if necessary. The cleaning rod and the brush must be inserted into the barrel bore from the chamber end to prevent wear or damage to the muzzle. Move the brush all the way through the barrel bore before reversing the movement. If you try to change directions with the brush in the barrel, the brush could stick.

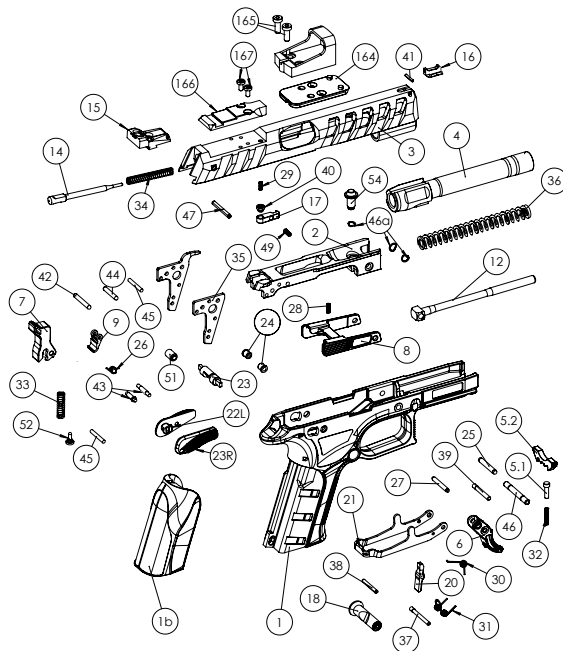
9.3.2 OTHER PISTOL PARTS CLEANING

Other parts of the pistol (including the external surface of the barrel) should be cleaned with a dry cloth, old toothbrush, nylon bristle brush or a wooden scraper. Preserving oil or paraffin oil can be used for proper cleaning. Never use any bore cleaning agents or solvents on the polymer parts of the pistol! These solutions could remain in the joints, and after some time could cause corrosion. Check that cloth particles or brush bristles have not become lodged in any part of the pistol.

9.4 PRESERVING

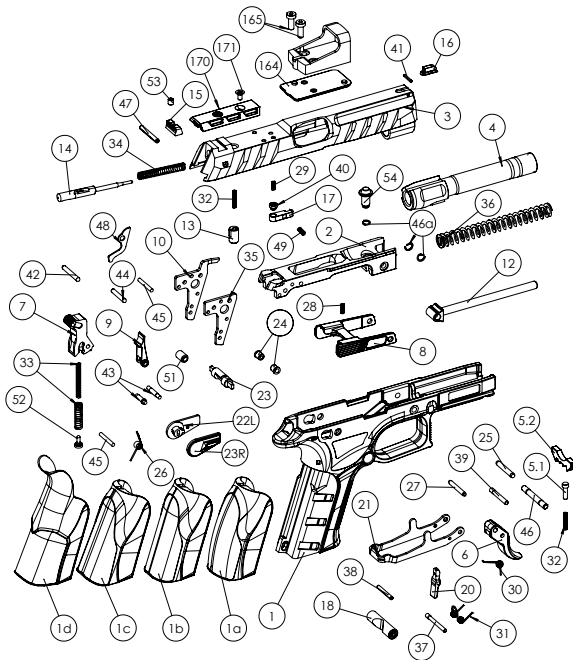
When the barrel bore, cartridge chamber, and all accessible parts are clean and dry, wipe these parts with a cloth soaked in gun oil, or apply oil spray. Remove all excess oil. At very low temperatures be sure to remove the oil from all accessible parts, or apply a lubricant designed especially for these conditions. Use thick preserving agents (preserving grease) only for long-term storage in demanding environments, and these agents must be thoroughly removed from all parts of the firearm before any use of the pistol.

10. Schematic drawing of X-Caliber Mk23



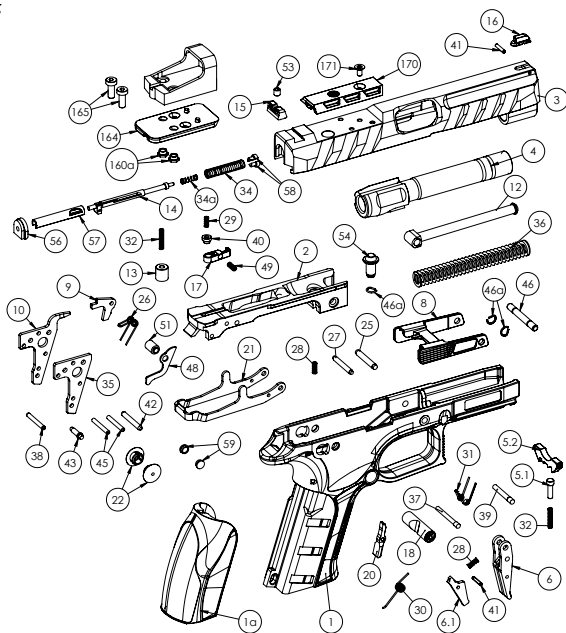
- | | |
|--------------------------------|---------------------------------|
| 1 – Grip | 32 – Firing pin block spring |
| 2 – Frame | 33 – Hammer spring |
| 3 – Slide | 34 – Firing pin spring |
| 4 – Barrel | 35 – Sideplate |
| 5.1 – Takedown segment plunger | 36 – Recoil spring |
| 5.2 – Takedown segment | 37 – Magazine catch spring |
| 6 – Trigger | 38 – Sideplate pin |
| 7 – Hammer | 39 – Trigger pin |
| 8 – Slide stop/release | 40 – Extractor detent plunger |
| 9 – Hammer sear | 41 – Front sight pin |
| 10 – Ejector | 42 – Firing pin block lever pin |
| 12 – Guide rod | 43 – Hammer sear pin |
| 13 – Firing pin block | 44 – Hammer pin |
| 14 – Firing pin | 45 – Hammer spring pin |
| 15 – Front sight | 46 – Slide stop/release pin |
| 16 – Rear sight, dovetail | 46a – Slide top/release pin |
| 17 – Extractor | 47 – Firing pin rollpin |
| 18 – Magazine release button | 48 – Firing pin block lever |
| 20 – Magazine catch | 49 – Extractor spring |
| 21 – Trigger bar | 51 – Spacer |
| 22 – Safety lever L+R | 52 – Hammer spring cap |
| 23 – Safety catch | 53 – Rear sight screw |
| 24 – Safety lever detent | 54 – Locking pin |
| 25 – Trigger bar pin, front | 164 – Red dot mounting plate |
| 26 – Hammer sear spring | 165 – Red dot screws |
| 27 – Trigger bar pin, rear | 166 – Rear sight base |
| 28 – Slide stop/release spring | 167 – Rear sight base screw |
| 29 – Extractor detent spring | |
| 30 – Trigger return spring | |
| 31 – Magazine catch spring | |

10. Schematic drawing of K100 Mk23



- | | |
|--------------------------------|-----------------------------------|
| 1 – Grip | 32 – Firing pin block spring |
| 2 – Frame | 33 – Hammer spring |
| 3 – Slide | 34 – Firing pin spring |
| 4 – Barrel | 35 – Sideplate |
| 5.1 – Takedown segment plunger | 36 – Recoil spring |
| 5.2 – Takedown segment | 37 – Magazine catch pin |
| 6 – Trigger | 38 – Sideplate pin |
| 7 – Hammer | 39 – Trigger pin |
| 8 – Slide stop/release | 40 – Extractor detent plunger |
| 9 – Hammer sear | 41 – Front sight pin |
| 10 – Ejector | 42 – Firing pin block lever pin |
| 12 – Guide rod | 43 – Hammer sear pin |
| 13 – Firing pin block | 44 – Hammer pin |
| 14 – Firing pin | 45 – Hammer spring pin |
| 15 – Front sight | 46 – Slide stop/release pin |
| 16 – Rear sight, dovetail | 46a – Slide stop/release spring |
| 17 – Extractor | 47 – Firing pin retaining rollpin |
| 18 – Magazine release button | 48 – Firing pin block lever |
| 20 – Magazine catch | 49 – Extractor spring |
| 21 – Trigger bar | 51 – Spacer |
| 22 – Safety lever L+R | 52 – Hammer spring cap |
| 23 – Safety catch | 53 – Rear sight screw |
| 24 – Safety lever detent | 54 – Locking pin |
| 25 – Trigger bar pin, front | 164 – Red dot mounting plate |
| 26 – Hammer sear spring | 165 – Red dot screws |
| 27 – Trigger bar pin, rear | 170 – Slide plate |
| 28 – Slide stop/release spring | 171 – Screw M3x6 |
| 29 – Extractor detent spring | |
| 30 – Trigger return spring | |
| 31 – Magazine catch spring | |

10. Schematic drawing of Q100 Mk23



- 1 – Grip
- 2 – Frame
- 3 – Slide
- 4 – Barrel
- 5.1 – Takedown segment plunger
- 5.2 – Takedown segment
- 6 – Trigger
- 6.1 – Trigger safety
- 8 – Slide stop/release
- 9 – Striker sear
- 10 – Ejector
- 12 – Guide rod
- 13 – Firing pin block
- 14 – Firing pin
- 15 – Front sight
- 16 – Rear sight, dovetail
- 17 – Extractor
- 18 – Magazine release button
- 20 – Magazine catch
- 21 – Trigger bar
- 22 – Manual safety delete plates
- 25 – Trigger bar pin, front
- 26 – Striker sear spring
- 27 – Trigger bar pin, rear
- 28 – Slide stop/release spring
- 29 – Extractor detent spring
- 30 – Trigger return spring
- 31 – Magazine catch spring
- 32 – Firing pin block spring
- 34 – Firing pin spring
- 35 – Sideplate
- 36 – Recoil spring
- 37 – Magazine catch pin
- 38 – Sideplate pin
- 39 – Trigger pin
- 40 – Extractor detent plunger
- 41 – Front sight pin
- 42 – Firing pin block lever pin
- 45 – Hammer spring pin
- 46 – Slide stop/release pin
- 46a – Slide stop/release spring
- 48 – Firing pin block lever
- 49 – Extractor spring
- 51 – Spacer
- 53 – Rear sight screw
- 54 – Locking pin
- 56 – Backplate
- 57 – Striker spring support
- 58 – Striker spring support, front
- 59 – Insert
- 160a – Red dot mounting plate nut
- 164 – Red dot mounting plate
- 165 – Red dot screw
- 170 – Slide plate
- 171 – Screw M3x6

11. WARRANTY

The manufacturer provides to the original retail customer a limited warranty for a period of two (2) years from the date of purchase which covers defects of material and manufacturing defects. It will be the discretion of the producer and importer as to whether the parts/labor or replacement will result in a charge to the customer. The importer or producer has the right to research, inspect and test the weapon to assess any claim made under the warranty.

WARRANTY EXCLUSIONS

The warranty is **VOID** if the firearm has been altered, abused, misused, damaged by accident, fired with hand loaded or reloaded ammunition, obstructions in the barrel or damage due to failure regular and necessary maintenance. Also this warranty is **VOID** if any unauthorized repair or alteration is performed on the firearm.

LIMITED WARRANTY

GRAND POWER s.r.o., Priboj 558, 976 13 Slovenska Lupca, Slovensko, warrants to the original purchaser that this GRAND POWER firearm will be free from defects in material and workmanship under normal use for a period of one year from the date of purchase. Under this warranty, GRAND POWER s.r.o. shall repair or replace any defective part, or at our option, exchange the firearm within a reasonable time and without charge. Claims under this warranty should be submitted in writing the stated one-year period, together with proof of the date of purchase and the firearm (insurance and shipment prepaid by the purchaser) to an authorized warranty center identified at www.grandpower.eu, www.grandpowerusa.com Return shipment and insurance shall be paid by GRAND POWER s.r.o. provided the claim is covered by this warranty. This warranty shall be waived if the claimed defect or malfunction was caused by neglect, abuse, careless handling, unauthorized adjustments, alterations or modifications, improper ammunition, or unreasonable use.

GRAND POWER s.r.o. SHALL NOT BE RESPONSIBLE FOR ANY INCIDENTAL OR CONSEQUENTIAL DAMAGES FOR BODILY INJURY PROPERTY DAMAGE OR ECONOMIC LOSS UNDER THIS WARRANTY OR OTHER GROUNDS. SOME STATES DO NOT ALLOW THE EXCLUSION OR LIMITATION OF INCIDENTAL OR CONSEQUENTIAL DAMAGES; SO, THE ABOVE LIMITATION OR EXCLUSION MAY NOT APPLY TO YOU.

NOTICE: It is illegal to, among other things, ship firearm with ammunition in the firearm or in the same packaging. Firearms and ammunition must be shipped separately. Make sure you are in compliance with all local and federal laws when shipping a firearm for repair under this service contract to any authorized service center. You are solely responsible for understanding and complying with all state, federal, or other applicable laws or regulations regarding the shipment of firearms and/or ammunition.



Mk23 series

GRAND POWER Ltd.
Príboj 558, 976 13 Slovenská Ľupča
SLOVAKIA

www.grandpower.eu